

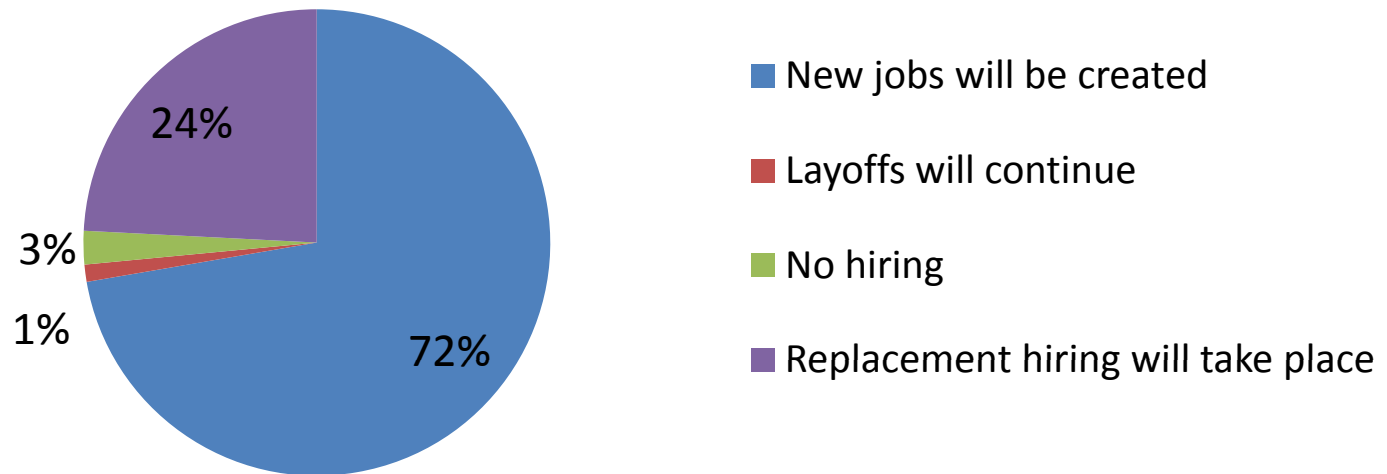
Naukri Hiring Outlook Survey 2010



Responses Generated

- Categories with sample representation
 - IT
 - ITES
 - Construction
 - Banking and Finance
 - Auto
 - Healthcare
 - Telecom

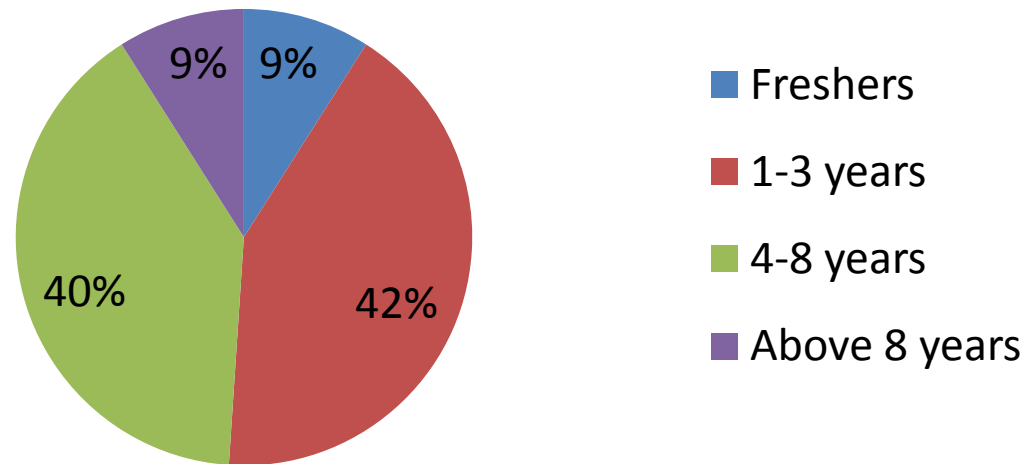
Question : According to you, what will be the hiring outlook for your Company / Organization in 2010?



What recruiters say...

- 72.3% of recruiters say that new jobs will be created
- 24.2% say that replacement hiring will continue
- 1.2% believe that layoff will happen
- 2.3% of the population believe that no jobs will be created

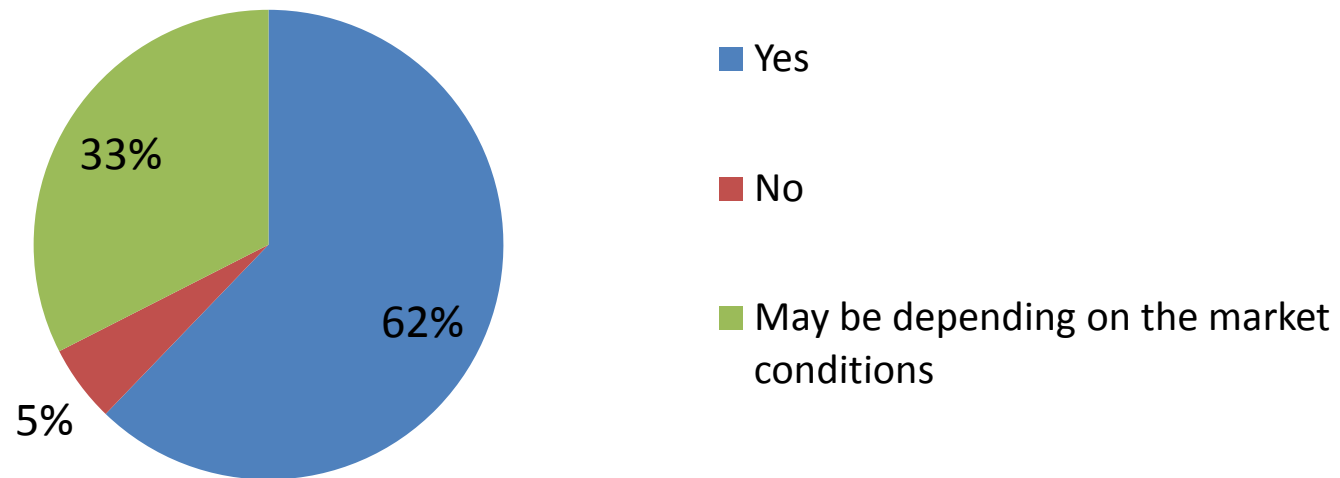
Question : Which experience levels will hiring take place?



Most hiring to take place in the 4-8 years experience bands

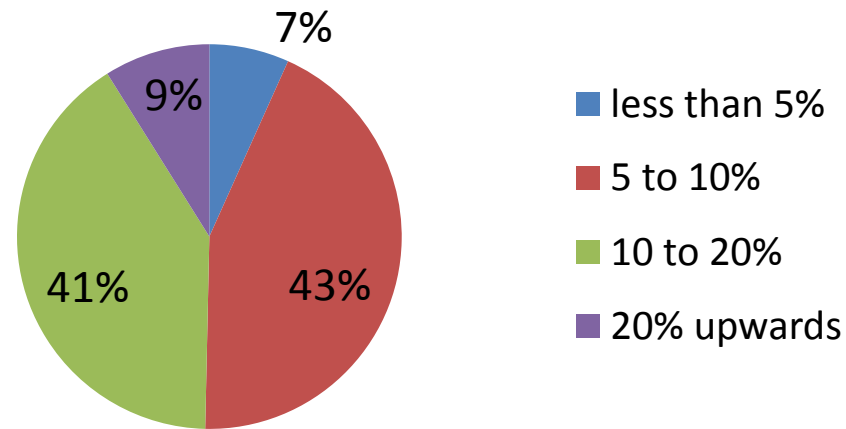
- *Fresher's- 9%*
- *1-3 years- 42.1%*
- *4-8 years- 40%*
- *Above 8 years- 9%*

Question : Will your organization pay increments?



- *62.3% of recruiters say YES to increments*
- *5.3% say NO*
- *32.5% are UNSURE and say depending on the market conditions*

Question : What will be the range of increments?



What recruiters says ...

- 43.6% say increments will range between 5 to 10%
- 40.7% recruiters expect it to range between 10 to 20%
- 8.9% expect above 20% increments
- While only 6.7% expect it to be less than 5%

← Most recruiters say

Sectoral Analysis: Hiring Outlook for 2010

Sector	Percentage	Response
IT	85%	New jobs will be created
	13%	Replacement hiring will take place
ITES	77%	New jobs will be created
Construction and Engineering	72.5%	New jobs will be created
Banking and Finance	78.5	New jobs will be created
Auto	75%	New jobs will be created
Healthcare	70.5%	New jobs will be created
	23.5%	Replacement hiring will take place
Telecom	55.5%	New jobs will be created
	40.74%	Replacement hiring will take place

Sectoral Analysis: Will there be increments?

Yes there will be increments

Sector	Percentage
IT	63%
ITES	54.7%
Construction	69%
Banking and Finance	61%
Auto	67%
Healthcare	70%
Telecom	37%

May be depending on market conditions

Sector	Percentage
IT	31.8%
ITES	35.8%
Construction	31.8%
Banking and Finance	35.7%
Auto	27%
Healthcare	29%
Telecom	55.5%

Sectoral Analysis: Range of Increments

5% to 10% hike

Sector	Percentage
IT	37.8%
ITES	43.4%
Construction	41.2%
Banking and Finance	45.2%
Auto	45%
Healthcare	26.4%
Telecom	48%

10% to 20% hike

Sector	Percentage
IT	40%
ITES	35.8%
Construction	43.7%
Banking and Finance	40%
Auto	27.5%
Healthcare	59%
Telecom	48.7%

Sectoral Analysis: Experience buckets

1 to 3 years

Sector	Percentage
IT	45%
ITES	53%
Construction	23.7%
Banking and Finance	45%
Auto	30%
Healthcare	41%
Telecom	26%

4 to 8 years

Sector	Percentage
IT	45%
ITES	17%
Construction	58%
Banking and Finance	42%
Auto	40%
Healthcare	35%
Telecom	44%